



Front washer

More than products. A partnership.

PL

A machine for thorough washing of public areas with pressurized water. In addition to the front ramp with nozzles, the PL washer can be equipped with additional nozzles for special purposes. The adaptability of the washer and the ease of use and maintenance guarantee excellent working results.



Thorough washing and cleaning of roads

The PL washer is a machine intended for washing roads and other public areas. It consists of a front ramp with nozzles, water pump, vehicle attachment system and hydraulic control system.

Highly efficient washing is achieved by the position of nozzles on the front ramp, which enables jets of adjacent nozzles to overlap. Lateral “frog” nozzles can be operated separately from the rest of the washer. They are used to wash drainage ditches and gutters along the road and the space under parked vehicles. At the same time, the side vertical ramp allows the washing of guardrails located along the edge of the road.

The PL washer is mounted onto the front truck plate. All functions are controlled by a control unit from the vehicle cabin. It uses the SV water tank as a water source but can also use the LIQUID or SOLID spreader instead. Thus, the winter service vehicle becomes a multifunctional vehicle that can be used all year round - in winter for snow clearing and salt spreading, and in summer for cleaning and washing.

The washing ramp can be raised, lowered, and rotated by 30°. The nozzles are equipped with filters that collect possible impurities from the water and ensure smooth water flow.

For thorough cleaning of hard-to-reach surfaces, the washer can be equipped with an additional manual high-pressure washer with a 25-meter hose on a winch with automatic winding.



High flow lateral nozzles can be mounted on the left and right ends of the ramp and directed individually via the hydraulic system



The side vertical ramp allows the washing of guardrails located along the edge of the road



A manual high-pressure washer helps washing hard-to-reach objects



WHY CHOOSE THE PL WASHER?



✓ Effective cleaning of public areas

Using 26 nozzles with filters to spray jets of water under pressure, PL efficiently and quickly cleans roads and other public areas.

It is suitable for washing asphalt, concrete and paved surface and washes leaves, debris, dust and other types of impurities.



✓ Multifunctional device

PL can use an SV water tank or, alternatively, a LIQUID or SOLID spreader as a water source. If the water source is a spreader, a snow plough can be installed on the vehicle's front side in the winter instead of the washer.

Thus, the vehicle can be used all year round: in winter for winter service, in summer for washing roads.



✓ Easy to operate

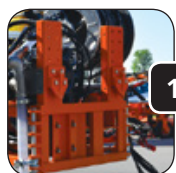
PL is controlled using a control unit in the vehicle cabin. All functions, such as switching on the water pump, water flow adjustment, switching on the operation of individual nozzles or ramps, are controlled from the vehicle cabin.



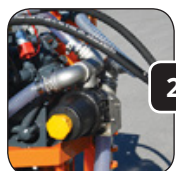
✓ Additional washing options

In addition to the basic horizontal ramp with nozzles, PL can be equipped with additional nozzles for special purposes:

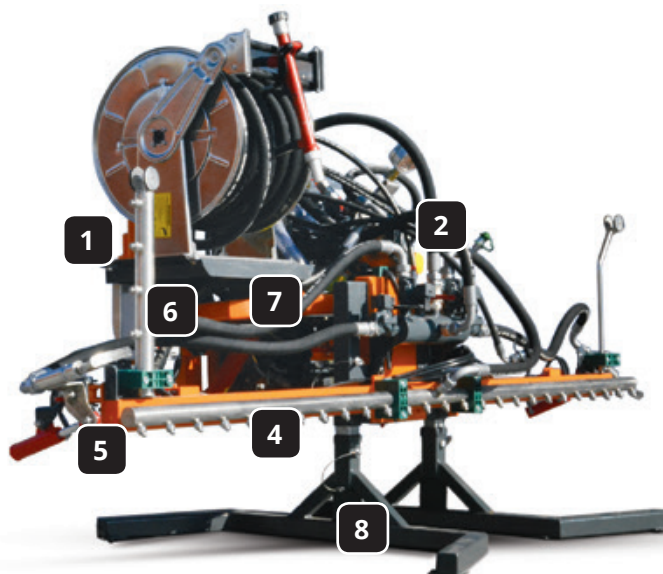
- high flow lateral nozzles,
- vertical ramp for washing fences,
- a manual high-pressure washer with a 25-meter hose.



1



2



3



7

1 | Mounting system

Used to attach the device to the front end of the vehicle.

2 | Water pump

Draws water from a tank at the rear end of the vehicle and sends it to the nozzles in front.

3 | Water source

As a water source, PL can use an SV water tank, LIQUID brine sprayer or SOLID spreader with installed brine tanks.

4 | Front ramp with nozzles

The front ramp made of stainless steel is intended for washing with water under pressure. The ramp can be raised, lowered, and rotated by 30° using hydraulic cylinders.

5 | Lateral nozzles (optional)

Used to wash drainage ditches and gutters along the road and the space under parked vehicles.

6 | Side vertical ramp (optional)

Allows the washing of guardrails located along the edge of the road.

7 | Hydraulic system

Hydraulic cylinders enable raising, lowering, and turning of the ramp left-right, as well as individual control of side nozzles.

8 | Storage legs

Used for safe storage of the device when it is not in operation.

TECHNICAL CHARACTERISTICS



Total height	Front washing ramp width	Rotation angle	Washing width at 30° rotation	Water pump capacity	Water pump pressure
mm	mm		mm		
1130	2775	30°	2385	0 - 240 l/min	max. 50 bar



RASCO d.o.o.
Kolodvorska 120b
HR - 48361 Kalinovac
Croatia



+385 48 883 112



rasco@rasco.hr



RascoCompany



Rasco_company



RascoTV



RASCO d.o.o.